

RHEEM® HYBRID ELECTRIC WATER HEATER

SMART ENERGY-EFFICIENT HOT WATER
FOR HOME OR BUSINESS



The new degree of comfort.®



COMMERCIAL

A Smart Solution for Efficient Hot Water.

The newest Rheem® *Prestige*® Series Hybrid Electric Water Heater is easy to sell, install and service. It's the most efficient water heater available, offering free cooling as a side benefit of wherever it is installed, making it easy for your customers to save money. It's also the quietest hybrid available and full of smart features your customers will love—like our exclusive Water Leak Detection Alert.



RESIDENTIAL

IN THIS GUIDE:

Rheem *Prestige*® Series 30 AMP Models

Rheem *Prestige*® Series 15 AMP Models

Rheem Commercial Models

Hybrid Electric Accessories



Why Rheem® Hybrid Electric Solutions?

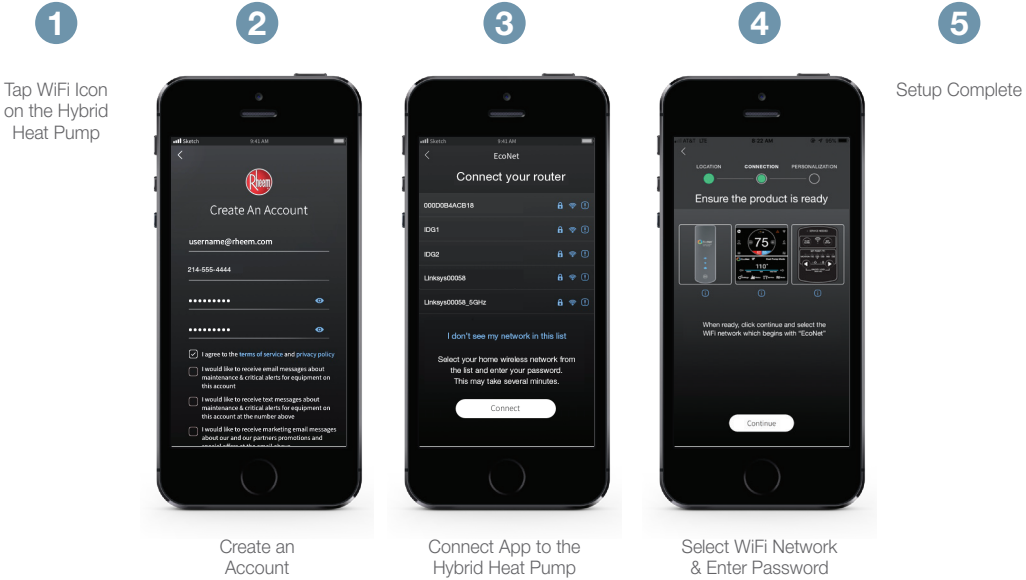


	Rheem Hybrid Electric	Standard Electric Tank-type	Standard Gas Tank-type
Energy Efficiency	3.55 UEF (268% Higher)	0.93 UEF	0.69 UEF
Energy Use	1255 kWh (73% Reduction)	4622 kWh	7735 kWh (264 Therm)
5 Operating Modes & Vacation Settings ¹	✓	✗	✗
Warranty	10-Year Tank & Parts Warranty	6	6
Water Leak Detection Alerts ¹	✓	✗	✗
Works with Nest ¹	✓	✗	✗
Local Rebates ²	✓	✗	✗
Government & Utility Rebates & Credits ²	✓	✗	✗

¹WiFi broadband Internet connection and EcoNet App required; Notifications are dependent on external factors beyond Rheem's control. ²Varies by state.

IT'S SIMPLE TO CONNECT

Integrated WiFi means no accessories needed for EcoNet connection



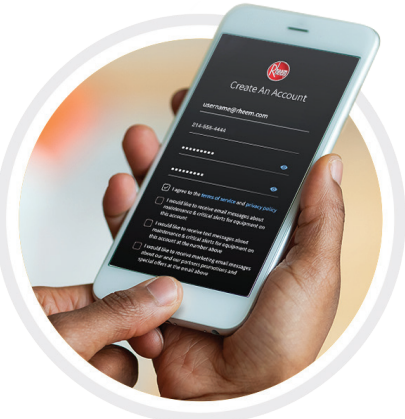
WHY CONNECTED WATER HEATERS?



Connect to EcoNet® for smart home integrated features, including:

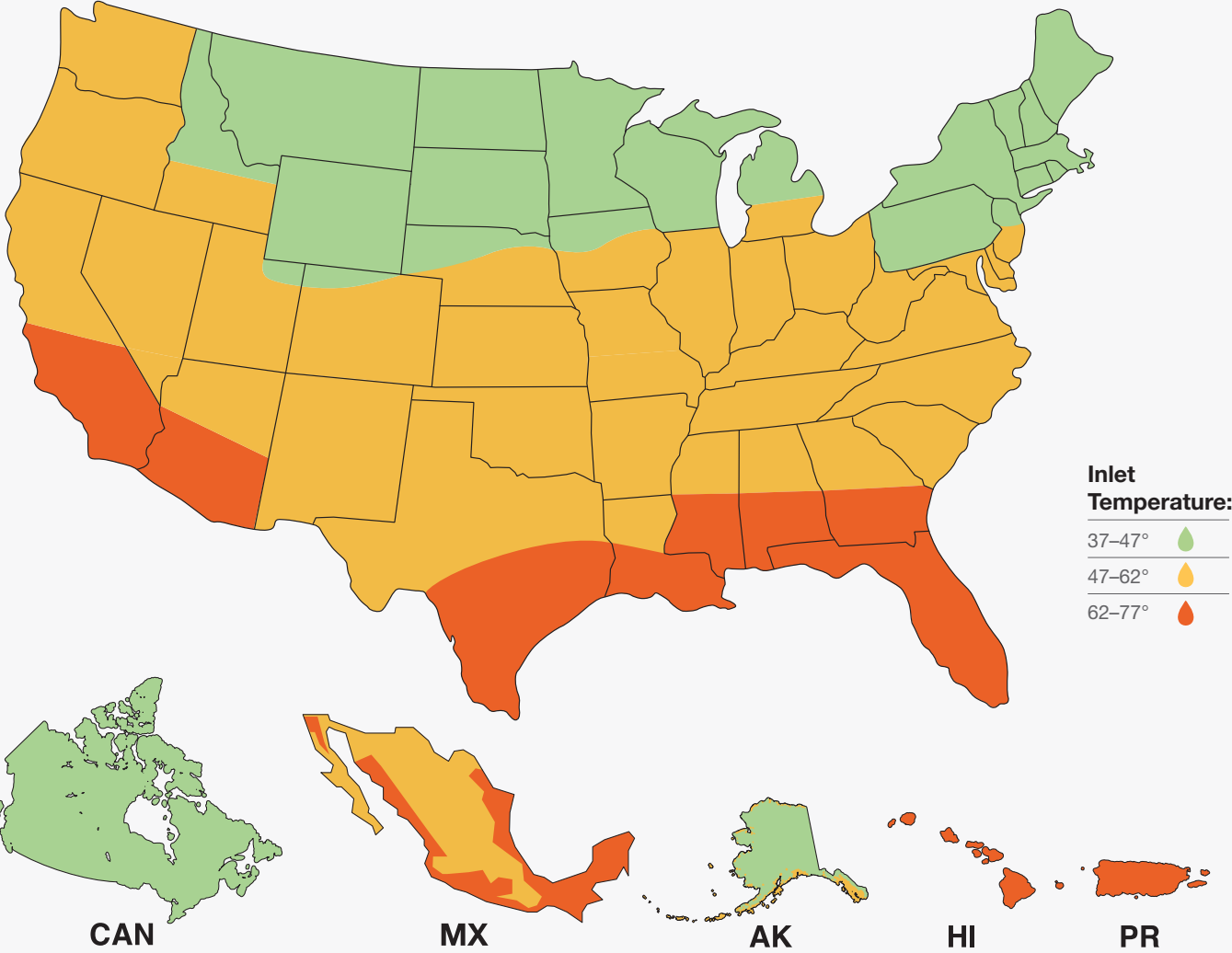
- Water leak detection and system shut off
- Mobile alerts for notifications / maintenance reminders¹
- Mobile gas and water usage reports
- Works with Google Nest smart home systems¹
- Easy access to energy settings including Vacation Mode²
- Store contractor information in the app to request a service call at the push of a button

¹WiFi broadband Internet connection and EcoNet App required; Notifications are dependent on external factors beyond Rheem's control. ²Actual savings depend on number of days vacation setting is used.
Apple and the Apple logo are trademarks of Apple Inc., registered in the U.S. and other countries. App Store is a service mark of Apple Inc., registered in the U.S. and other countries.
Google Play and the Google Play logo are trademarks of Google LLC.



Selecting the Right Solution Is as Easy as 1, 2, 3

1 Identify customer location on the map and respective inlet temperature



**HELP YOUR
CUSTOMERS
START SAVING
TODAY**

Learn more at
Rheem.com/Hybrid
or ask your local distributor



2 Assess your customer's hot water usage based on the number of back-to-back showers

3 Determine the best model for your customer based on their usage and inlet temperature from step 1

MODEL, INLET TEMPERATURE AND APPROXIMATE USAGE CHART

15 AMP Models		Inlet Temperature 37-47°	Inlet Temperature 47-62°	Inlet Temperature 62-77°
Models rated at:	Model #	Approximate Usage	Approximate Usage	Approximate Usage
50 Gallon	PROPH50 T2 RH350 D15	3 showers	4 showers	5 showers
65 Gallon	PROPH65 T2 RH350 D15 6	4 showers	5 showers	6 showers
80 Gallon	PROPH80 T2 RH350 D15	5 showers	6 showers	7 showers

30 AMP Models		Inlet Temperature 37-47°	Inlet Temperature 47-62°	Inlet Temperature 62-77°
Models rated at:	Model #	Approximate Usage	Approximate Usage	Approximate Usage
50 Gallon	PROPH50 T2 RH350 DCB	3 showers	4 showers	5 showers
65 Gallon	PROPH65 T2 RH350 DCB 6	4 showers	5 showers	6 showers
80 Gallon	PROPH80 T2 RH350 DCB 6	5 showers	6 showers	7 showers

USAGE KEY



Inlet Temperature:
The temperature of cold water before it enters your water heater.

Approximate Usage:
120°F and shower temperature of 105°F. Flow rates vary depending on temperature of incoming cold water and water heater set temperature.

NOTE: Number of showers indicates how many eight-minute showers can be delivered back-to-back.

Rheem® Prestige® Series

High-Efficiency Residential Hybrid Electric Solutions

3,000
PROCLUB
POINTS

EASY TO INSTALL

- **Fits more applications**—Our models are duct-ready, a great option for homes with less space. These models are ready for flexible or rigid duct to be installed directly to the unit for ducting intake and exhaust.
- **Cost-effective install**—The only duct-ready hybrid electric water heaters that do not require the purchase of an additional duct adapter for a potential savings of around \$200.
- **Easy to install**—Easy access to electrical connections and two-side shipping, which means it can be laid horizontally, so it's easy to get the unit to the installation location.
- **Tier 3 out of the box**—Models come compliant with NEEA and do not require a duct adapter (applies to select states only).



Description	50 Gallon	65 Gallon	80 Gallon
15 AMP	PROPH50 T2 RH350	PROPH65 T2 RH350 D15	PROPH80 T2 RH350 D15
30 AMP	PROPH50 T2 RH350 DCB	PROPH65 T2 RH350 DCB	PROPH80 T2 RH350 DCB

A large image of a Rheem Prestige Series water heater in a garage setting. A bicycle is hanging on the wall to the left of the unit. A blue circular callout with the text "BUILT-IN WATER LEAK SENSOR" is overlaid on the bottom right of the unit.

Electric Breaker Size	15 AMP			30 AMP					
Gallon Capacity	50	65	80	50	65	80			
UEF First HR Rating GPH	53		67	67	75	89			
UEF	3.55			3.70					
Estimated Yearly Energy Cost	\$110			\$161					
Compressor BTUh	4200								
Sound Level (dBA)	49								

Description	Height	Diameter	Unit Weight (lbs)	Approx. Ship Weight (lbs)
50 Gal	61"	22 1/4"	178	218
65 Gal	64"	24 1/4"	225	262
80 Gal	74"	24 1/4"	244	281

SEE THE SAVINGS

Added smart features like vacation setting¹, plus energy cost savings all add up for a quick payback and big savings for homeowners.² Custom savings estimates based on house size, lifestyle and region are available at Rheem.com/Hybrid by simply entering the unit price, energy rate and local rebates.

¹Actual savings depend on number of days vacation setting is used. ²Based on comparison of a 50-gallon Rheem® Prestige® Series Hybrid Electric Water Heater with 3.55 UEF against the estimated annual operating cost of a standard electric water heater of like capacity manufactured prior to 2015 under NAECA II which is likely being replaced.

Rheem® Prestige® Series

High-Efficiency Residential Hybrid Electric Solutions

PROFESSIONAL PRESTIGE HYBRID

The Rheem Prestige Series Hybrid Water Heater is the most efficient water heater available on the market, saving customers up to \$4,750¹.

- 1 The air passes through a filter to remove any debris or dust.
- 2 A fan pulls air through the upper port of the heat pump. If ducted, it pulls in air from the intake ducting and then exhausted through the side to the outside duct without impacting your indoor air. If it is not ducted, it pulls in room air to heat the water and expels cold air to the surrounding area, reducing the space temperature approximately 15 degrees—a great option for a hot attic or garage.
- 3 Heat in the air is absorbed by eco-friendly refrigerant inside the evaporator coil, and cool (dehumidified) air is exhausted.
- 4 Refrigerant is pumped by a compressor through the refrigerant system. The compressor increases the temperature of the refrigerant, which is delivered to the condenser.
- 5 The condenser tubing is wrapped around the water heater tank where heat is transferred from the refrigerant to the water.
- 6 All functions are controlled simultaneously by an advanced control. Includes five modes for versatile operation: Energy Saver, High Demand, Electric, Heat Pump and Vacation.
- 7 The condensate drain connection routes condensate created during the water heating process away from the unit.
- 8 The electric elements are accessible on the front of the unit in an upper and lower location.

¹Based on comparison of a 50-gallon Rheem® Prestige® Series Hybrid Electric Water Heater with 3.55 UEF against the estimated annual operating cost of a standard electric water heater of like capacity manufactured prior to 2015 under NAECA II, which is likely being replaced.



THE RHEEM DIFFERENCE

- **Highest Residential Efficiency**
Industry Leading!

At 3.55 UEF, this water heater is the most efficient available and provides an estimated \$4,750 in energy cost savings over 10 years¹

- **Widest Ambient Operating Range**
Best In Class!

Ambient operating range: 37–145°F offers more days of HP operation annually; designed to meet Northern Climate Spec (Tier 3)

- **Quiet Design**
Best In Class!

At 49 dBA, it features best-in-class sound and operates at a level equivalent to dishwashers on the market today

- **Water Leak Detection Alert**
RHEEM EXCLUSIVE

If water is detected outside the unit, the water heater sends an automatic alert so homeowners can take action to prevent damage

- **Three-Way Unit Accessibility**

Quick access to the heat pump cover with no water connection to remove, easy access to elements and thermostats, and a snap-off electronic control make servicing the water heater faster and easier

- **Side-Inlet / Outlet Water Connections**

Designed to protect heat pump components and electronic controls from potential water damage better than the top-of-unit connections

¹Based on comparison of a 50-gallon Rheem® Prestige Series Hybrid Electric Water Heater with 3.55 UEF against the estimated annual operating cost of a standard electric water heater of like capacity manufactured prior to 2015 under NAECA II which is likely being replaced.

Rheem® Light Duty Commercial Hybrid

4,000
PROCLUB POINTS

GET THE SMARTEST, MOST EFFICIENT ELECTRIC WATER HEATER IN ITS CLASS. AVAILABLE IN 50-, 65- AND 80- GALLON MODELS

- Delivers more hot water per hour than most standard electric water heaters
- Eligible for national utility rebates and grid-enabled
- High efficiency 3.55–3.70 UEF
- Electrical wiring
- 29 GPH recovery capacity

EASY TO INSTALL & SERVICE

- Easily replaces a standard electric water heater
- Duct ready – inlet and exhaust
- No duct adapter required
- Easy access to side connections and quick access to electrical junction box
- 3/4" NPT water inlet and outlet; 3/4" condensate drain connections
- Easily accessible, top-mounted washable air filter
- Enhanced-flow brass drain valve

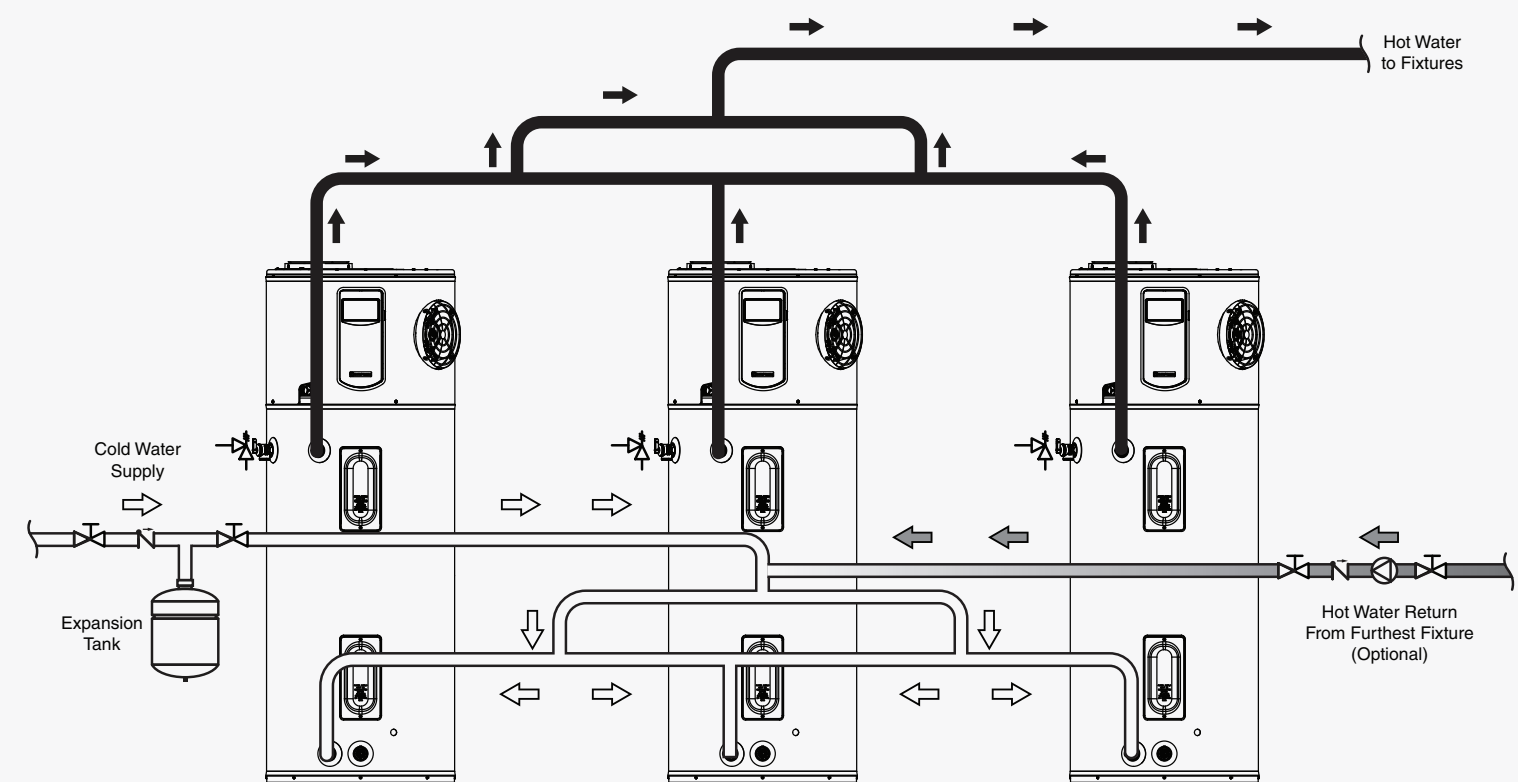
BUILT-IN PROTECTION & INTELLIGENCE

- Integrated WiFi¹
- Built-in LeakSense™ Leak Detection System
- EcoNet® Smart Monitoring System, providing energy reports and system alerts to your mobile phone
- Various energy-efficient operating modes

¹WiFi broadband Internet connection and EcoNet® App required; Notifications are dependent on external factors beyond Rheem's control.



Multi-Unit Installation Option



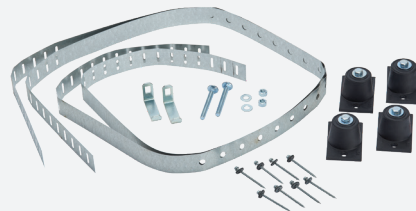
Accessories



8" Rheem®-Approved Damper Kit

Exhaust only to the outside ducting configuration (no inlet duct)

- **SP20888** – Kit Contains: (1) Damper (Round), Duct Tape, (2) Cable / Duct Ties, (1) Straight Duct 24GA 8" x 2.5", (8) Screws



Earthquake Isolation Kit

- **SP20882** – Kit Contains: (2) Straps, (4) Brackets, (2) Nut Kit 1/4", (2) Carriage Bolts 3/8" x 3", (8) Screws – Hex Washer Self-Drilling 1/4–2-1/2", (4) Isolators – Neoprene, (2) Earthquake Washer Bracket Kit 3/8"



Vibration Isolation Kit

- **SP20885** – Kit Contains: Template, (4) Isolators – Neoprene, (4) Tape – Double Sided



25' Flexible 8" Diameter Duct Kit

For up to 25' of ducting

- **SP20889** – Kit Contains: (1) Flexible 8" Duct, Duct Tape, (4) Cable / Duct Ties, (1) Straight Duct, (4) Screws



Rigid Elbow Duct Kit

For use in tight installation places where space needs to be minimized

- **SP20890** – Kit Contains: (1) Elbow – 90 degrees rigid, Duct Tape, (1) Straight Duct 28GA 8" x 7.875", (8) Screws



Drain Pans

- **AP12935** – 24" drain pan for 50 Gallon models
- **AP12936** – 26" drain pan for 65 and 80 Gallon models

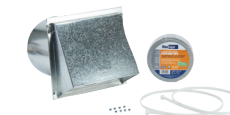


UL-CERTIFIED TERMINATION KITS

8" Diameter Kit

Termination to the outside or to the attic with 8" diameter

- **SP20884** – Kit Includes: (1) 8" Air Intake Terminal, Duct Tape, (2) Cable / Duct Ties, (8) Screws



7" Diameter Kit

Termination to the outside or to the attic with 7" diameter

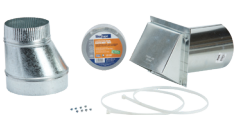
- **SP20885** – Kit Includes: (1) 7" Air Intake Terminal, (1) Reducer – 8" to 7", Duct Tape, (2) Cable / Duct Ties, (8) Screws



6" Diameter Kit

Termination to the outside or to the attic with 6" diameter

- **SP20886** – Kit Includes: (1) 6" Air Intake Terminal, (1) Reducer – 8" to 6", Duct Tape, (2) Cable / Duct Ties, (8) Screws



5" Diameter Kit

Termination to the outside or to the attic with 5" diameter

- **SP20887** – Kit Includes: (1) 5" Air Intake Terminal, (1) Reducer – 8" to 5", Duct Tape, (2) Cable / Duct Ties, (8) Screws



Financing & Support



INCREASE SALES WITH CONVENIENT CREDIT OPTIONS

The Rheem® KwikComfort® Financing suite of programs is designed to do one thing: help you increase sales by making it even easier for your customers to get their new Rheem Water Heating system. It includes features and benefits that will appeal to you and your customers. Three different KwikComfort Financing programs are available:



Residential KwikComfort Financing—via Synchrony Bank—helps homeowners purchase Rheem equipment on a budget-friendly payment plan—which allows you to increase sales, sell larger projects, broaden your customer base and create repeat business. Plus, Rheem and Synchrony offer:

- Training for selling based on customer needs
- Instant online application and a convenient payment estimator tool
- Reporting tools to track applications and billing, making financing easy



Residential KwikComfort Second Look Financing—via Fortiva™ Retail Credit—lets you offer financing to credit-challenged homeowners turned down by a primary lender. So, more customers can purchase Rheem products—plus, pay for additional repairs, product upgrades and services, helping you:

- Increase sales opportunities
- Sell larger purchases and upgrades
- Attract customers and create repeat business



Commercial KwikComfort Financing—via Fernwood Capital™ & Leasing—provides financing options for business owners and national accounts, so you can:

- Increase sales with more affordable equipment
- Improve rate of repeat business
- Receive faster payment to your company
- Increase profits by selling monthly payments, not total cost



CONTACT US

Customer Service, Warranty, Parts.....	800.621.5622
Plumbing Support Team.....	866.339.2388
EcoNet® Technical Support.....	800.255.2388
Technical Service.....	800.HEATER3 (800.432.8373)

Visit us online at
Rheem.com/Hybrid
or see your local distributor.

PRO CLUB
REWARD YOURSELF

**Install Rheem. Earn points.
Get cool stuff.**

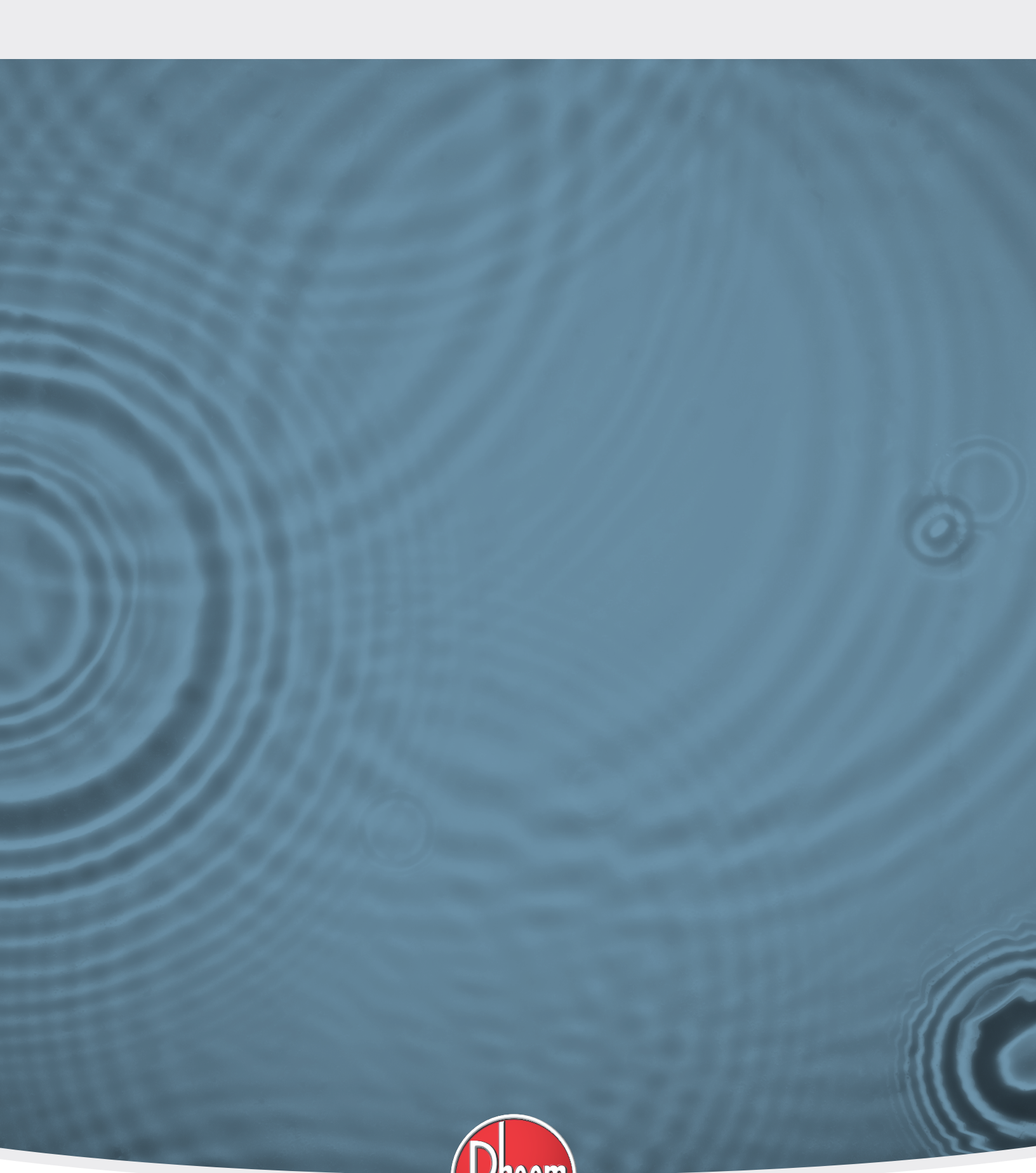
As a Rheem ProClub member, you can earn points for installing Rheem Hybrid Electric Gas Solutions. Look for the points callout throughout this brochure.

MyRheem.com/ProClub



Download the Rheem App for product information, registration, parts and more!





Rheem Water Heating
1115 Northmeadow Parkway, Suite 100
Roswell, Georgia 30076

The new degree of comfort.®

Rheem.com

Printed in USA 7/19 WP RH-HPE-1001