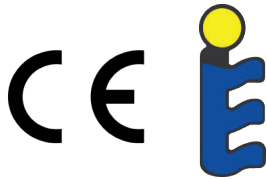




## SOLAR THERMOSYPHON WATER HEATERS

### RUUD SOLAR WATER HEATING NATURAL CIRCULATION SYSTEMS ARE DESIGNED WITH AN EXTREMELY DURABLE STORAGE TANK



#### Performance:

- 2.5 - 3mm metallic storage tank of Ruud Solar Thermosyphon Water Heaters, tested to DIN 4800-5, for much higher resistant to high pressure water supply networks as most ordinary solar water heaters.
- One single absorber sheet with selective titanium treatment, ultrasonic welded onto copper pipes and solar tempered glass with specialized crystals for minimum sun reflection and higher output.
- Double insulation made from 40mm thick rockwool in the back side and 20mm thick fiberglass placed on the sides, for high performance and minimum heat losses from the collector.

#### Longer Life:

- Ruud Solar Thermosyphon storage tank has an exterior casing made from anodized aluminum, which is extremely durable to ultra-violet rays, in humid climates, and in coastal areas.
- The advanced design of the sealed jacket around the storage tank guarantees the operation of the system in freezing conditions, and also secures the collectors against corrosion and from interior clogging.
- Interior protection of the water tanks with double "direct" glass enameling baked at 850°C. The tanks has a long life span, even in waters with high salinity content.



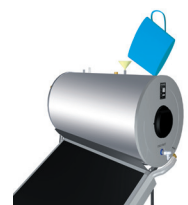
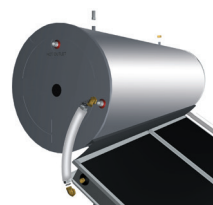
1 Assemble frame

2 Install Tank

3 Install collector(s)

4 Install connections

5 Fill Glycol



RELY ON RUUD.™

# SOLAR THERMOSYPHON WATER HEATERS

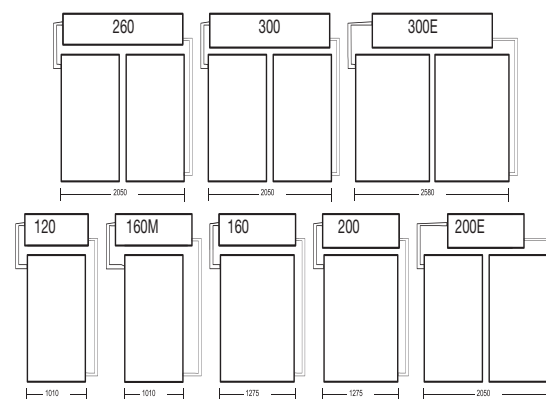


## Features

- The Ruud Solar Thermosyphon Water Heaters collector has a special Tempered Glass (4mm thick), to withstand hail and prevent any accidents.
- The excellent outer design of the unit along with the well designed support base, allow for the easy and adjustable installation of the unit on top of tiled or any other type of roofs.
- The side coverings of the collector protect the connection pipes from the ultra-violet rays and offer at the same time a nice aesthetic look that could be incorporated in every architectural building design.
- Magnesium rod offers an additional protection in the tank and its position allows an easy and quick replacement.

## Technical specifications of the collector:

1. Welding technology: Ultra-sonic Welding
2. External frame : anodized aluminium profile
3. Back side : galvanized sheet - 0.4 mm
4. Back insulation : rock wool - 35 mm
5. Side insulation : glass-wool - 20 mm
6. Absorber : one plate sheet with Selective Titanium treatment
7. Absorber's tubes : copper pipes, Risers Ø 10 & Headers Ø 22
8. Cover : solar tempered glass
9. Water-tightness : EPDM rubber / transparent silicone



Ruud MODEL	STORAGE TANK			COLLECTOR					SUPPORT BASE	TOTAL WEIGHT	
	Dimensions (mm)	Weight (kg)	Cylinder Pressure test	Dimensions (mm)	No. of Collectors	Surface area (mm²)	Weight (kg per collector)	Pressure test	Weight (kg)	EMPTY (Kg) (+/-5%)	FULL (kg)
120	530x1100	48	10 BAR	2050x1010x90	1	2,10	36	10 BAR	24	108	231
160M	530x1320	59	10 BAR	2050x1010x90	1	2,10	36	10 BAR	24	119	281
160	530x1320	59	10 BAR	2050x1275x90	1	2,62	45	10 BAR	24	128	290
200	570x1320	65	10 BAR	2050x1275x90	1	2,62	45	10 BAR	24	134	338
200E	570x1320	65	10 BAR	2050x1010x90	2	2,10	36	10 BAR	26	163	376
300	570x2050	110	10 BAR	2050x1010x90	2	2,10	36	10 BAR	32	214	469
300E	570x2050	110	10 BAR	2050x1275x90	2	2,62	45	10 BAR	32	232	520