



Heavy & Medium Duty electric POWERPACK: DESIGNED FOR SMALL-VOLUME APPLICATIONS WHERE HIGH QUALITY, ASME RATED WATER HEATERS ARE A MUST



PowerPack™ Benefit

These small volume electric water heaters deliver 90-190°F water at a 200°F temperature limit. They are installed close to fixtures, eliminating the wait for hot water. PowerPack's long-life ASME tank design feature proprietary steel formulation with high temperature porcelain enamel to maximize corrosion resistance.

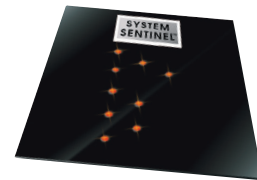
PowerPack Features

- 98% Thermal efficiency
- 13, 19.9, 30 and 40-Gallon capacities
- 3 kW through 36 kW
- 208, 240, 400, 415 & 480 Voltages
- Field convertible
- Single phase and factory wired
- Lifeguard™ heating elements
- Immersion thermostat
- 3/4" Water connections
- 2-1/2" Rigid polyurethane foam insulation
- System Sentinel LED diagnostic system
- Integral fusing on each element
- Two anode rods for long life and corrosion resistance
- Full-port, full-flow brass drain valve
- Factory installed CSA/ASME rated temperature and pressure relief valve

- Electrical connections: pre-wired, accessible control box with multiple knock-outs on side in size selections to match the National Electric Code
- Single panel control box with hinged door: provides immediate access to all electrical components and elements
- Terminal block: all models are equipped with UL listed terminal blocks
- All units are furnished with a fused 120 volt control circuit; this circuit is created by an internal multi-tap transformer that has four (4) taps for the primary voltages, 208, 240, 400, 415 and 480

Warranty

- 3-Year limited tank warranty, upgradable to 5 years
- 1-Year limited parts warranty



PowerPack Models

DESCRIPTION				DIMENSIONS (INCHES)		
GAL. CAP.	MODEL NUMBER	INPUT KW	THERMAL EFF.	HEIGHT	WIDTH	SHIP WT. (LB.)
13	E12A	3-9	98%	28-1/2	19	135
19.9	E20A	3-18	98%	36-1/4	19	160
30	E30A	3-36	98%	49-1/4	19	192
40	E40A	3-36	98%	53-3/4	21	228